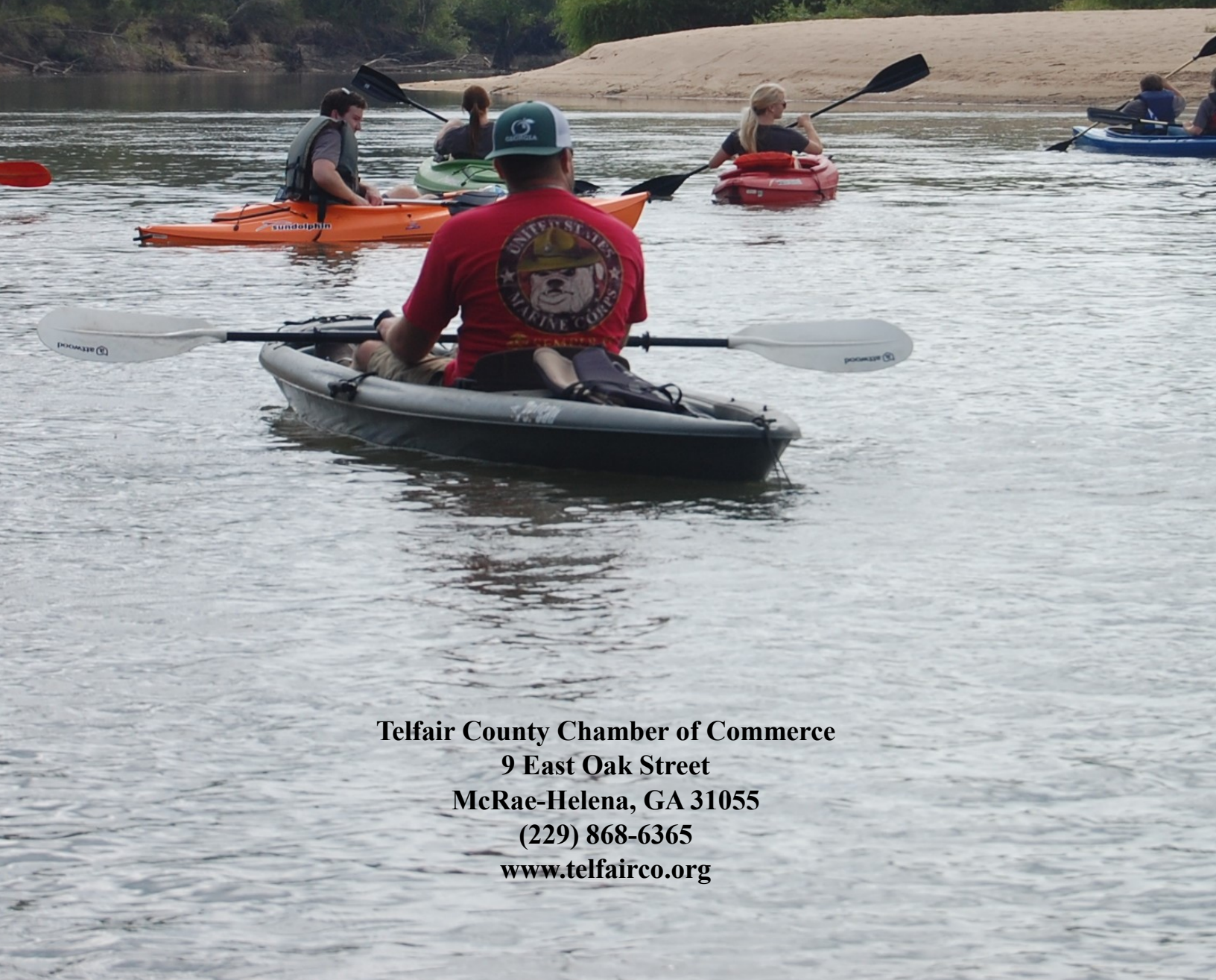


# DISCOVER

# Telfair County, GA

Jacksonville | Lumber City | McRae-Helena | Milan | Scotland



**Telfair County Chamber of Commerce**  
9 East Oak Street  
McRae-Helena, GA 31055  
(229) 868-6365  
[www.telfairco.org](http://www.telfairco.org)

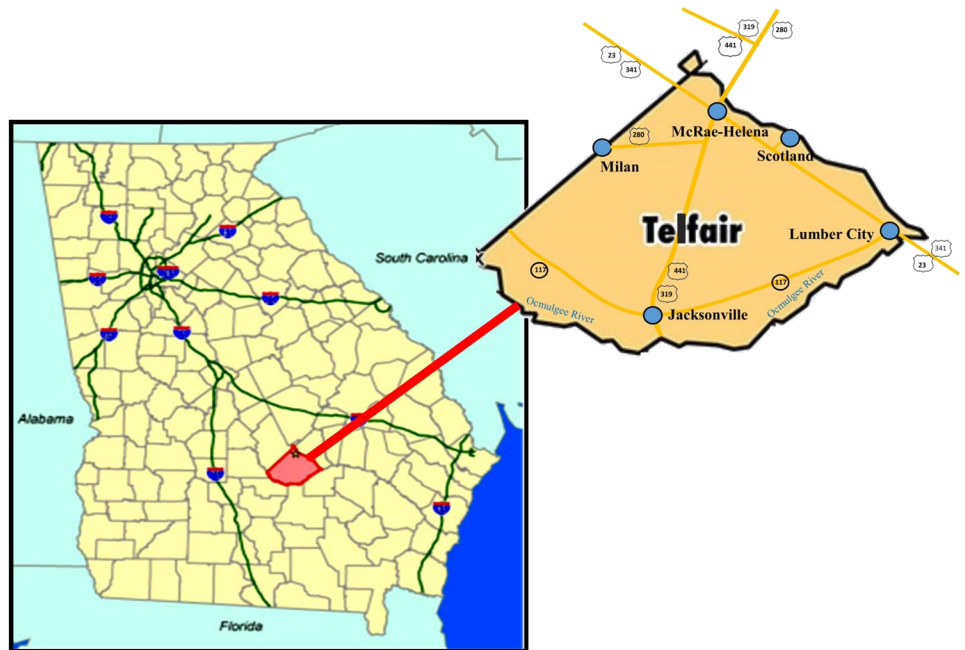


# TELFAIR COUNTY HISTORY

In 1807, Telfair Count was the 35th county formed in Georgia. It was named after Governor Edward Telfair and primarily settled by Scottish Presbyterians from the Carolinas.

Telfair is located in south central Georgia, 154 miles southeast of Atlanta and 70 miles south of Macon.

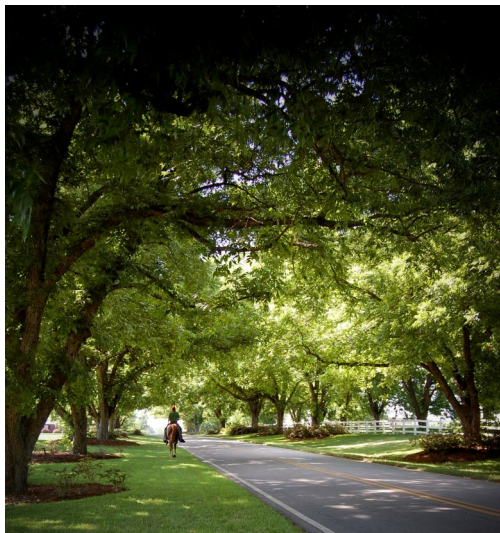
The population is around 16,500 spreading over five cities: McRae-Helena (county seat), Jacksonville, Lumber City, Milan and Scotland with several unincorporated communities.



## Climate & Country Side Views

Telfair has four beautiful seasons. Winters are mild with an average high of 55°F while summers are warm with an average high of 93°F. Spring and Autumn are transitional with temperatures leaning to the warm side.

The mild climate throughout the year provides unlimited opportunities for recreation. Telfair's creeks and rivers provide for bountiful fishing and water activities. Hunters delight in dove, quail, wild turkey, deer and small game.



The county's rural roads provide a pleasant mixture of gently rolling hills dotted with our number one natural produce - pine trees and other country-side views. In the Summer, the sweet fragrance of honeysuckle adds to a delightful evening ride.

# Public Safety

Feeling safe and secure for your family is important to Telfair County.

Telfair has 24-hour security offered for residents and visitors within the county provided by the Sheriff and his deputies, city police officers and the Georgia State Patrol along with the local fire departments and Emergency Medical Services.



# Jacksonville, GA

Jacksonville, Georgia is named for General Andrew Jackson and was the first county seat government of Telfair County.

Between 1807 and 1812, court was held in various homes. In 1812 a courthouse was erected on the site of the present Methodist Church. In 1871, the county seat was moved to McRae.

Jacksonville was an important part of the Blackshear Trail which followed the Altamaha and Ocmulgee River from Darien to Fort Hawkins.

It was also the center of a large and wealthy plantation economy. Jacksonville was a landing for freight and passenger traffic on the river for some years before and after the War between the States.



The southern part of the City is bordered by the Ocmulgee River.



# Lumber City, GA

In the late 1800's Lumber City was a thriving town due to the tremendous amount of lumber and other products being shipped by steamboats to Brunswick and Darien, GA down the Ocmulgee River. Also, steamboats on the Ocmulgee River made connections with Southern Railroad in Lumber City. It was once known as the Artesian City due to the numerous artesian wells.

Lumber City is also home of the historic train trestle. This historical structure can be seen from Hwy 341, just south of Lumber City as you cross the Ocmulgee River.

It is not clear as to the date of construction of this landmark, but it could have been as early as 1910. This once was a rotating bridge which allowed for

the passage of steamboats that travelled the Ocmulgee river. The trestle was operated from the shed on top of the structure where the operator could see



# McRae-Helena, GA

The City of McRae became the county seat in 1871 and was incorporated on March 3, 1874. It was named after Daniel Murphy McRae, a Scotts man, who was known for aiding in Telfair's county seat being moved from Jacksonville to McRae.

The City of Helena was incorporated on January 1, 1890. It was known as a small friendly town.

On January 1, 2015, McRae and Helena made history as the first city-to-city merger in decades. The two sister cities, known as the City of McRae and the City of Helena, is now known as the City of McRae-Helena. The city's new name dates to the time when the local school system was known as McRae-Helena Schools. By consolidating, the two cities will be able to provide better services for their citizens.

McRae-Helena is also known as a crossroad city due to the

fact that five major highways cross in the city.



McRae-Helena has a replica of the Statue of Liberty that is one-twelfth the size of the original.





# Milan, GA

With the coming of the Seaboard Railroad in the early 1800's came the beginning of Milan, Georgia. A train depot was constructed in 1899. The Milan Depot was named by the wife of an executive of the railroad after she returned from a visit to Europe. The depot is still standing and has been refurbished.

Railroad transportation made it easy for farmers to ship their products to seaport cities. At one time, Milan had three cotton gins, sawmills, and turpentine stills.

Part of the city is located in Telfair County and part in Dodge County. Milan is a serene and peaceful community surrounded by rich farmland.



# Scotland, GA

Scotland, Georgia was chartered as a city on August 9, 1911.

Gum Swamp, or as some know it, Little Ocmulgee River, follows the outer edge of Scotland where, at one time, thousands of logs were rafted down to Darien, GA. It was also one of the chief cotton markets of this territory.





# Public Schools

The Telfair County Public School System pursues excellence by establishing a global learning environment for the student's success.

Throughout the school system, programs and resources are in place to meet the needs of all students from Pre-K through 12th grade.



Telfair is fortunate to have top-quality teachers, staff and administrators who care deeply about the well being of the students and who work hard to create an

environment that is safe, welcoming and academically rigorous for all students.



# Technical College

Oconee Fall Line Technical College is a unit of the Technical College System of Georgia. This technical college is dedicated to the economic and workforce development of Telfair County and the surrounding area by providing technical and continue education, adult education and business and industry services.

They offer associates degrees, diplomas and technical certificates in a student-centered learning envi-

ronment through tradition and distance learning modes of delivery.

A campus is located in McRae-Helena-Little Ocmulgee Instructional Center, as well as a campus in nearby Dublin.





# Public Library

The Telfair County Public Library is a part of the Ocmulgee Regional Library System.

The library provides a variety of opportunities:

- Books & periodicals for all ages
- Youth Vacation Reading Programs
- E-Books
- Book Signings
- Genealogy Department
- Public Computer Terminals
- Reference Help
- Readers Advisory Assistance
- Public Meeting Rooms



# Leisure Services

Leisure activities are another of Telfair County's favorites. The county has a full time Department of Leisure Services that coordinates recreational activities for the young and the young-at-heart.



Some of the activities include softball, basketball, baseball, volleyball and football.

These organized sports have hundreds of participants each year.



# Cultural Activities

Cultural activities are prevalent in Telfair County. As with many small towns, church activities are an important way of life for Telfair with over 100 churches, some having originated in the mid 1800's. Most denominations are represented.

In addition, the Old South Georgia College, as it is affectionately dubbed, is a cultural center currently known as the Telfair Center for the Arts and operated by the Pioneer Historical Society. The South Georgia College Administration Building was placed on the National Register of Historic Places in 1982.



Concerts, dance recitals and chorus groups are just a few of the many activities provided.

Tours are available by appointment: Phone: (229) 315-9045;

email: [phshistory@yahoo.com](mailto:phshistory@yahoo.com)

Web: [tcfta.com](http://tcfta.com)



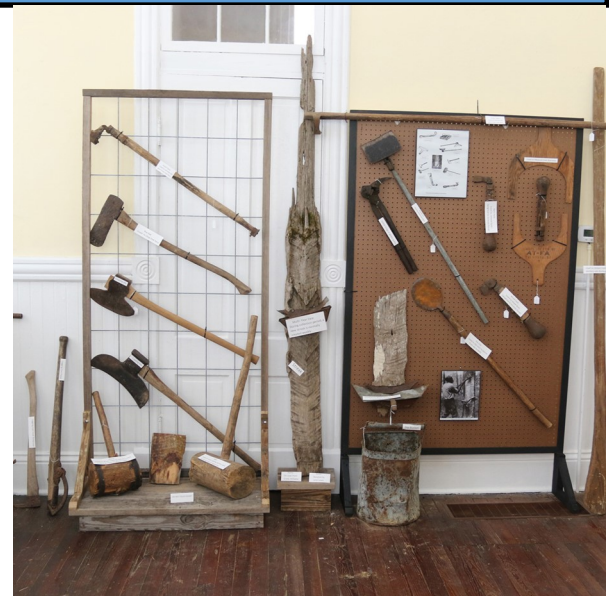
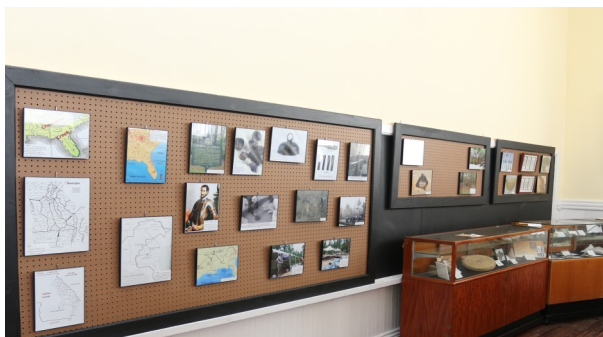
# Museums of History

These museums display items of historic agriculture, naval stores, timber occupations and modes of transportation. Items displayed relate to Telfair's communities, notable individuals and families, record setting hunting and fishing, Indians native to the area, historic schools and cemeteries.

The Telfair Museum of History is located at 119 W. College St. in McRae-Helena, GA. Tours are available by appointment: Phone (229) 315-9045; Email: [phshistory.org](mailto:phshistory.org)

Website:

[www.phshistory.org](http://www.phshistory.org)





# Historic Tours

## Telfair Driving Tour

The Pioneer Historical Society has published the “Telfair Driving Trail” guide. This tour takes you through Telfair County highlighting historic sites and structures of the count. A printed copy of this guide book can be purchased from the Pioneer Historical Society (229) 868-7114; [www.phshistory.org](http://www.phshistory.org)

## Walking Tour

This tour of homes is an easy, self-guided tour of more than 30 of McRae-Helena’s homes and churches of the New South Era. The guide can be downloaded from [www.telfairco.org](http://www.telfairco.org).



# Peaches to the Beaches Yard Sale

Parades, festivals and other outdoor events are held throughout the year which includes the well known Peaches to the Beaches Yard Sale.



Peaches to the Beaches Yard Sale is Georgia’s longest yard sale and takes place along Hwy 341 from Barnesville to Brunswick.

Over 200 miles of yard sales link peach growing counties to the coastal area, with stops in nearly every community along the way.

The yard sale features vendors selling everything from antiques, locally crafted items and the tradition-



to the official individual vendors.

Official yard sale dates and hours are the second Friday and Saturday in March; 8 a.m. - 6 p.m. both days.



For more information: [www.peachestothebeaches.com](http://www.peachestothebeaches.com)



# Ocmulgee River

The Ocmulgee River makes up the entire southern border of Telfair County. Along this boundary, the river flows generally in a west to east direction. This gentle arc forms what is known as the “Big Bend” of the Ocmulgee River. The river is popular for sportsmen of all kind: canoeing, kayaking, fishing, camping and bird watching.



miles east of Jacksonville;

- ◆ Scuffle Bluff Landing located off Hwy 117 on the Horse Creek WMA which is approximately eight miles west of Lumber City or eight



miles east of Jacksonville;

- ◆ Dodge’s Lake Landing located off Hwy 117 approximately twelve miles west of Jacksonville;

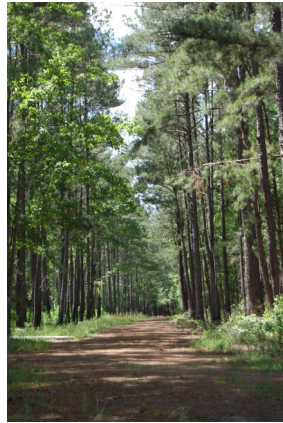
There are four boat ramps for public access to the river:

- ◆ Lumber City Landing located off Hwy 341, at the southern city limits of Lumber City;
- ◆ Stave’s Landing located off Hwy 117 approximately eight miles west of Lumber City or eight



# Horse Creek Wildlife Management Area

Horse Creek Management Area is located on Hwy 117 approximately eight miles west of Lumber City or eight miles east of Jacksonville. There are 8,400 acres where hunters delight in the dove, quail, wild turkey, deer and small game. The area is plentiful in pine and hardwood. The southern side of the WMA is bordered by the Ocmulgee River.



The WMA offers an excellent opportunity to view wading birds, song-



birds and many other non-game species of wildlife.

Camping is available in the primitive campground.

Telfair County is also home of the World Record Large-mouth Bass caught by George Perry at Montgomery Lake, an oxbow off the Ocmulgee River located on the WMA.



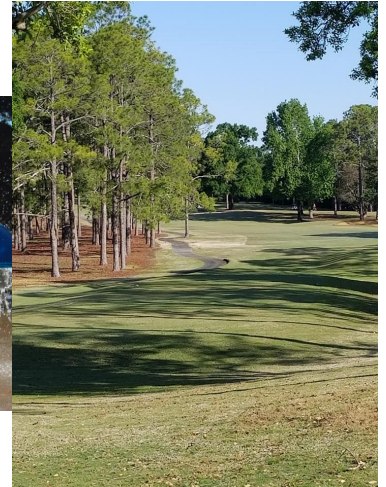


# Little Ocmulgee State Park

Little Ocmulgee State Park, known locally as “Little O” is scattered with Live Oaks, Spanish Moss, sand hills, and tall southern pine trees which makes for a relaxing destination for families to spend an enjoyable time hiking, playing tennis, golfing and lake activities.

Amenities include:

- ◆ Lodge
- ◆ Cabins
- ◆ 18-hole golf course
- ◆ Nature trails
- ◆ Splash Pad
- ◆ 265 acre lake for fishing and canoeing
- ◆ Group shelters
- ◆ Picnic area



◆