



## Fact Sheet: Telfair County Manufacturing/Distribution Building -Building Specifications-

A publication of the Telfair County Chamber of Commerce



### Building Specifications

Year Built	2003
Improvements in:	2010
Max. Available Space (sq. ft.)	71,700
Available Office Space	2,700
Building Dimensions	230' x 300'
Ceiling Heights	26' / 32'
Site Acreage	13.00
Floor Thickness (inches)	6
Construction Material	Metal
Drive in Truck Doors	3
Insulated:	Yes

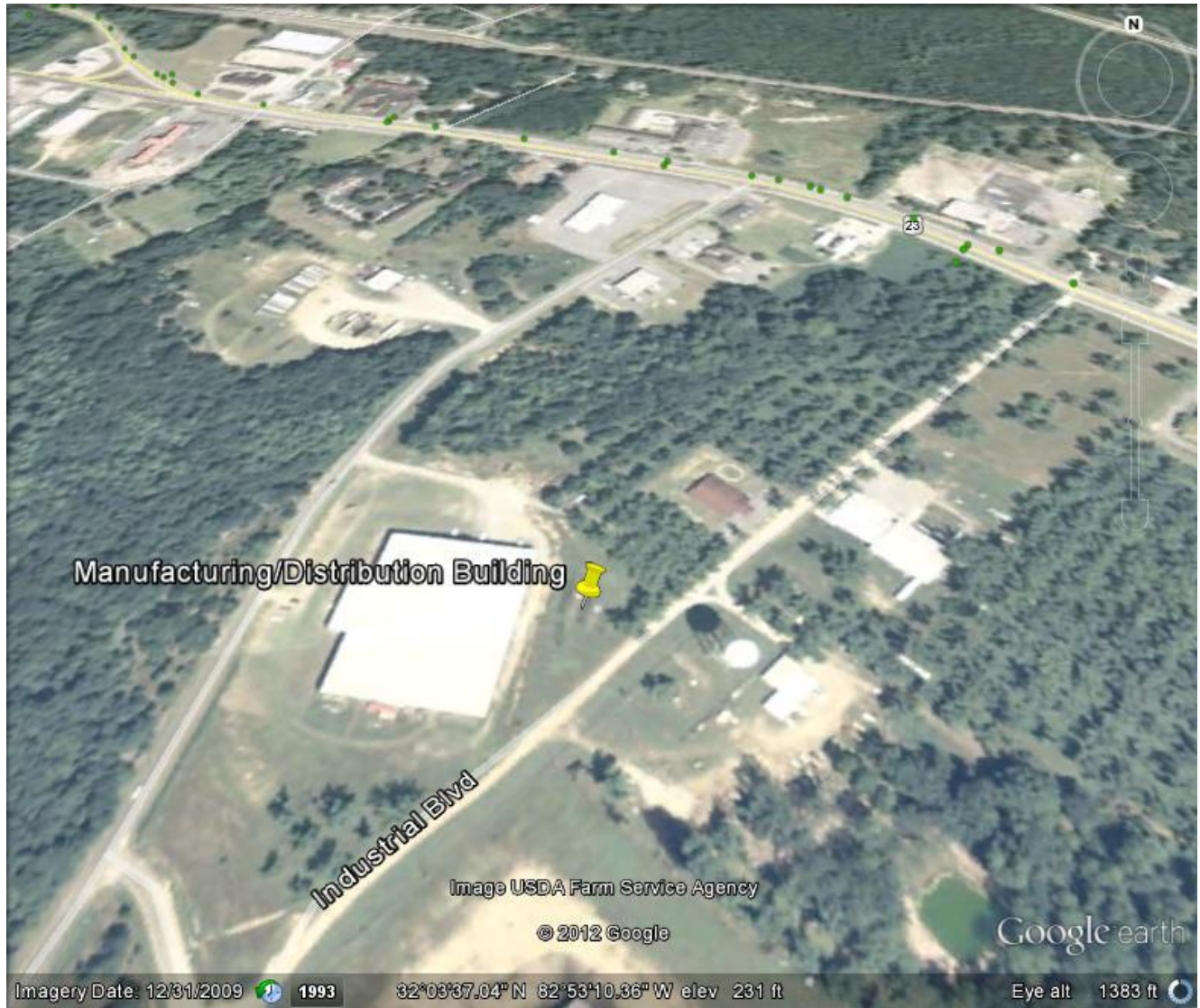
Former Use: Manufacturing/Distribution





## Fact Sheet: Telfair County Manufacturing/Distribution Building -Aerial Base Map-

A publication of the Telfair County Chamber of Commerce



---

Telfair County Chamber of Commerce & Telfair Development Authority  
9 East Oak Street \* McRae, Georgia 31055  
Office (229) 868-6365 \* Cell (229) 860-0203 \* Fax (229) 868-7970 \* Email [rogers@telfairco.org](mailto:rogers@telfairco.org)  
[www.telfairco.org](http://www.telfairco.org)





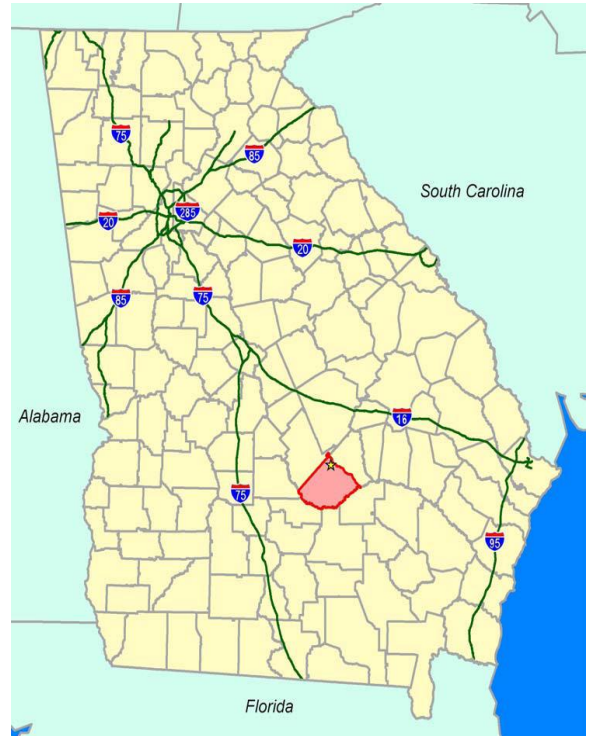
# Fact Sheet: Telfair County Manufacturing/Distribution Building -Transportation-

A publication of the Telfair County Chamber of Commerce

## Transportation

### Highway Access

- Site is located on 236 E. Willow Creek Lane, McRae, GA
- Site is 57 miles from Interstate 75-Cordele via US 341/US 280
- Site is 69 miles from Interstate 75-Tifton via US 341/ US 319
- Site is 61 miles from Interstate 75-Perry Via US 341
- Site is 78 miles from Interstate 75-Macon via US 341/US 441/Interstate 16
- Site is 111 miles from Interstate 95-Brunswick via US 341
- Site is 142 miles from Interstate 95-Savannah
- US 341//US 280/ Site is 24 miles from Interstate 16. US 441/280 connects this site to Interstate 16

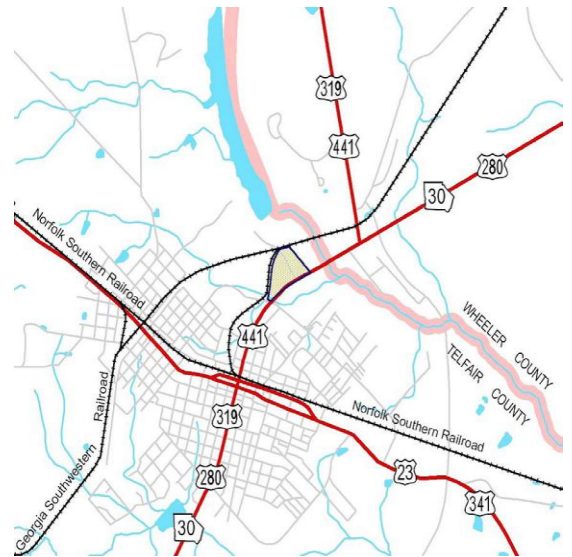


### Airport Access

- Telfair-Wheeler Airport      1 mile from site  
5001 ft. Runway

### Waterways

- Port of Savannah      140 miles from site
- Port of Brunswick      100 miles from site
- Barge Facility      100 miles from site
- Brunswick Docks





## Fact Sheet: Telfair County Manufacturing/Distribution Building -Utilities-

A publication of the Telfair County Chamber of Commerce

---

### Utilities

Water	City of McRae	Water Main Size: 6”
Sewer	City of McRae	Sewer Main Size: 10”
Natural Gas	Atlanta Gas Light company	Gas Main Size: 2”
Telecommunications	Windstream	
Electrical Suppliers	Georgia Power	