

The Voice of Telfair County

December 2023 Issue

A monthly newsletter brought to you by the Telfair County Chamber of Commerce

The Telfair County Chamber of Commerce is now accepting nominations for:

*2024 Telfair County Business of the Year

This award is given to recognize the contribution of a local business, organization or agency that has made a positive contribution to fostering and promoting a business vitality in Telfair County. Nominee must be a Member in Good Standing with the Telfair County Chamber before January 1, 2024.

*2024 Man and Woman of the Year

This award is given to recognize a Telfair County Man and Woman's generosity of spirit, volunteerism, of long-term community support and dedication to Telfair County.

Nomination forms must be submitted to:

Telfair County Chamber of Commerce

9 East Oak St. | McRae-Helena, GA

or by email to: rogers@telfairco.org

Deadline to submit a nomination: 12 noon on January 2, 2024

Qualifications for nominations are listed on the nomination forms.

Nomination forms can be obtained from:

Website: <http://www.telfairco.org/chamberprograms/citizensbusinessofyear.html>

or requested by email: rogers@telfairco.org

Winners will be announced at the Chamber Banquet on February 22, 2024.



The Telfair County Chamber of Commerce
CHAMBER BANQUET

Thursday, February 22, 2024

Marketing Opportunities

First come-first confirmed basis on each level.

Deadline to purchase a Marketing Opportunity is January 22, 2023

***Presenting Sponsor—\$1500 (1 available)**

Benefits: 15 Banquet tickets * Recognition from podium night of event * Table signage * Large sign displayed at event * Logo/Business information on home page of Chamber website & event page for 6 months * Logo/Business information on Chamber Facebook page cover photo for 6 months * Logo/Business information on Chamber newsletter home page of for 6 months.

***Gold Sponsor—\$750 (10 available)**

Benefits: 10 Banquet tickets * Recognition from podium night of event * Table signage * Business information on Chamber website event page for months for 3 months * Business information on Chamber Facebook page posted once a week for 3 months * Business information in Chamber newsletter home page of for 3 months.

Silver Sponsor—\$500 (20 available)

Benefits: 5 Banquet tickets * Recognition from podium night of event * Table signage * Business information on Chamber website event page for 1 month * Business information on Chamber Facebook page posted once a week for 1 month * Business information in Chamber newsletter home page for 1 month.

To purchase a sponsorship, contact:
Telfair County Chamber of Commerce
9 East Oak St.
McRae-Helena, GA 31055
Ph: 229-868-6365
Email: rogers@telfairco.org

If additional tickets are needed or if you do not wish to be a sponsor, tickets can be purchased at \$40 each by February 12, 2023.





Eastman Smokers

Toys for Tots

This will benefit our local community!

Please join us in helping the less fortunate ones in our community. Whether it is the change in your pocket, bringing a toy (We will personally wrap any donated toys), or even just spreading the word that we are accepting donations for Toys for Tots.

Other than accepting donations, how will Eastman Smokers be contributing to Toys for Tots? Eastman Smokers will be personally buying six bicycles. In sets of two (one girl and one boy) we will be buying small, medium, and large. Our company will also be kicking the collection jar off with \$20.00. Every day until the last day of collections Eastman Smokers will be adding \$10.00 to the donation Jar.

Merry
Christmas

Join Us For **Christmas Night Out** McRae-Helena, GA **November 30, 2023 | 6 p.m. - 8 p.m.**

Join us for the annual **CHRISTMAS NIGHT OUT** from 6 p.m. - 8 p.m. at participating McRae-Helena locations where you can visit with friends, hear live entertainment, visit with Santa Claus, Mrs. Claus, Elves and enjoy refreshments and **SHOP, SHOP, SHOP!!!**
So come out and support our local businesses!!

Christmas Night Out Participating Locations

Browse-A-Bit Too

24 S. Eastman | McRae-Helena
(Behind Helena Post Office)
Sweets & Goodies by Lois Blankenship
Robby Cumming with Gospel Music
Happy Hummingbird
& much more

Chicken Box

Will be located at Pap Pap's
19 First Ave. | McRae-Helena
Hot & Iced Coffee, Beignets, Cookies
Hot Chocolate & More

Farmers Home Furniture

5 W. Pine St. | McRae-Helena,
In Store Sales

Fat Boy's Custom Tee Co.

170 S. Third Ave. | McRae-Helena
Food Truck & Train Rides

Holly Diana Floral

20 Telfair Ave | McRae-Helena
Shopping Discounts, Door Prizes,
Gift with first 20 Purchases.
Nana's Sweet Treats; Allie Lynns;
Roy's Food Booth; Carla Durrence Baked Goods
Entertainment by TCES & TCMS Choruses, Bedazzled
Dancers.
Dancing Christmas Tree
Pop-Up Boutique.



McRae Methodist Enrichment School

At Stamps Walker Agency
34 W. Oak St. | McRae-Helena, GA
Bake sale

McRae Rotary Club

Will be located in Farmers Furniture Park-
ing Lot
5 W. Pine St. | McRae-Helena
Free Hotdogs and drinks.

Merchants & Citizens Bank

6 W. College St. | McRae-Helena
Popcorn, Cotton Candy, Hot Chocolate

Ryals Drug Store & Ryals Outfitters

12 S. Second Ave. | McRae-Helena
Frosty the Snowman, Snow, Story time
with Mrs. Claus.

Telfair Family Connection & Council on Alcohol & Drugs

Will be located in Farmers Furniture Park-
ing Lot
5 W. Pine St. | McRae-Helena,
Health & Prevention Fair, Free Food, Chil-
dren's Activities, Health Resources:
vaccines, screening & Information

Your Choice Healthcare

23 W. MLK Blvd | McRae-Helena
Visit with Santa

MERRY CHRISTMAS





FRIENDS OF LOSP PRESENT

Sparkle in the Park

December 2, 2023 - January 1, 2024
Dark until 10PM

\$5 Park Pass per car (Donations appreciated)

Drive through event





Friends of LOSP Present

Breakfast with Santa

Saturday, December 2nd

8:30 - 10:30AM

\$10 per person

(Kids under 2 eat free)

The Lodge @ Little Ocmulgee SP

Tickets sold the morning of event





CELEBRATE

Christmas
IN LUMBER CITY

MONDAY, DECEMBER 4, 2023

5:30 PM TO 7:30 PM

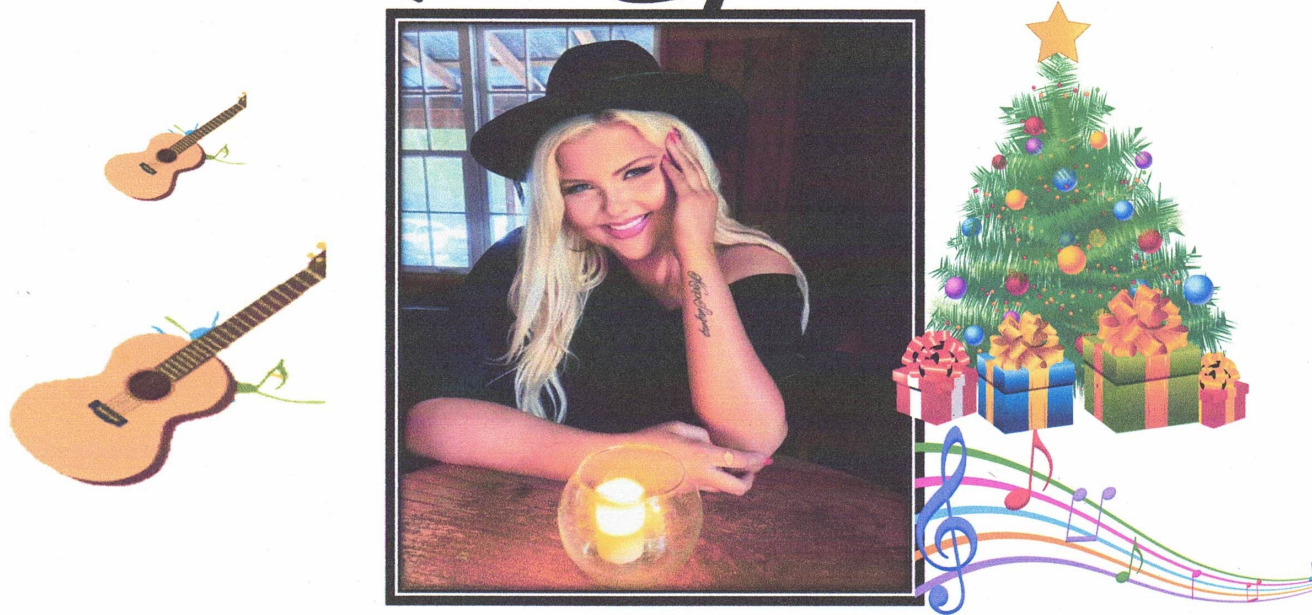
MAIN STREET - DOWNTOWN LC

Santa Claus - Music - Games - Food - Parade



Telfair County
Annual Christmas Tree Lighting
Featuring a Concert by

Kori Spires



Telfair Center for the Arts
Pioneer Historical Society's Fifth Annual
Festival of Trees

Dec. 3 6:00 P.M. Kori Spires in Concert (Free)
plus Lighting of Community Christmas Tree

Friday & Saturday Dec. 1 & 2, Dec. 8 & 9, 15 & 16
View the Trees 5-8 P.M.

Sunday Dec. 3, 10, 17
View the Trees 1 - 5 P.M.



Telfair County Christmas Parade

Parade date has changed to:

Friday, December 8, 2023

Parade begins at 6 p.m.

Theme: Discover the Magic of Christmas

Parade Route: Begins at the intersection of Forsyth Street & Eighth Street, traveling down Oak Street & ending at Piggly Wiggly.

Entry forms and guidelines can be downloaded from:

<http://www.telfairco.org/christmasparade.html> or picked up at the Chamber office.



More information:
9 East Oak St.
McRae-Helena, GA
www.telfairco.org
(229) 868-6365



2ND ANNUAL BONNIE CHRISTMAS

FREE ADMISSION

CRAFTS FOOD
JEWELRY SWEETS
AND SO MUCH MORE!

11 am - 7 pm

December 9

Milan Gymnasium

Pictures taken with
Santa & the Grinch

SPONSORED BY MILAN
DEVELOPMENT
AUTHORITY

Friends of LOSP present
**Reindeer Games and
Sleigh Rides**

**Dec 16
7pm-9pm**

Free with \$5 park
pass



Little Ocmulgee State Park



Telfair County Sheriff's Office

10th Christmas TOY DRIVE



Santa will be passing
out toys at TELFAIR
COUNTY
COURTHOUSE

DECEMBER 23rd

DROP-OFF LOCATIONS:

*Telfair County Courthouse, Dollar Generals throughout Telfair, Telfair
County Library, McRae Market Place, Telfair County Health Department,
and Roses*

FOR MORE INFORMATION CONTACT DEPUTY CONEY AT 229.315.4908



Employment Assistance

Georgia Department of Labor

5016 Park Way
Eastman, GA 31023
(478) 374-6994
(478) 374-6996 Fax
(478) 374-6832 TTY
www.dol.state.ga.us
Counties Served:
Bleckley, Dodge, Telfair, Wilcox

Job Training Unlimited

Located at
Little Ocmulgee Instructional Center
140 N. Third Ave.
McRae-Helena, GA 31055
(800) 503-0204
www.worksourceheartofgeorgia.org

Employment Opportunities

Coca Cola

Apply online at
www.Coca-ColaUnited.com/Careers

Guidoni, USA, Inc.

To Apply:
263 E. Oak St.
McRae-Helena, GA 31055
229-868-4827

Department of Juvenile Justice

Positions: Juvenile Correctional Officers
To Apply: djj.georgia.gov/careers

Lumber City Nursing & Rehab

To Apply:
Lumber City Nursing & Rehab
93 Highway 19
Lumber City, GA 31549
(912) 363-2484

Oconee Fall Line Technical College

To apply go to:
<https://bit.ly/3pM4EUZ>

Telfair Forest Products

Apply in person at:
11 West Industrial Blvd.
Lumber City, GA 31549

Telfair State Prison

170 Longbridge Rd.
McRae-Helena, GA 31055
(229) 868-3288

Three Rivers Home Health

Apply <https://careers.lhcgroup.com/careers-home/>



Educational Opportunities



Oconee Fall Line Technical College
560 Pinehill Rd. ~ Dublin, GA
Phone: (478) 275-6589
Toll Free: 1 (800) 200-4484
www.oftc.edu

OFTC offers 100+ programs of study in program areas like Healthcare, Business Services, Arts & Sciences, Public & Professional Services, Industrial, and Transportation.

Little Ocmulgee Instruction Center
140 N. Third Ave ~ McRae-Helena, GA
(229) 868-7834 | www.oftc.edu

For more information about programs offered at Little Ocmulgee Instructional Center:

Contact: Taprena Folsom.

Mon 8-5

Tues 8-5

Wed 8-5

Thurs. 8-5

Fri. Closed



Adult Education

FREE Adult Education classes

for high school equivalency preparation, basic skills instruction, digital and workplace literacy - morning, afternoon and evening classes (both in-person and online)!

Request information online using the link below and an OFTC Adult Education representative will contact you.

OFTC.EDU/GOTIMEINFO

OFTC Office
of Adult Education:

478-274-7848

aevirtualenrollment@oftc.edu



Chamber Members

Businesses and Organizations

229 & Company
AB Appraisal Services, LLC
Baby See Baby Due
Bank of Lumber City
Be-Dazzled Beads, LLC
Browse-A-Bit-Too Liquidation Station
Capstone Benefits Consulting
Caring Companions, LLC
Cedar Lane Supper Club
Chicken Box
ChokoladeStyles
City of Lumber City
City of McRae-Helena
City of Milan
City of Scotland
CJ's Flowers & Gifts
Community Health Care Systems, Inc.
Community Life Church of McRae-Helena, Inc.
Cortlee's Classic Catering
Deep Productions, LLC
Development Authority of Telfair County
Eastman Smokers
El Aguila Mexican Restaurant
Farmers Home Furniture
Fat Boy's Custom Tee Company
1st Franklin Financial Corporation
Georgia Power
Golden Isles Healthcare, LLC
Golden Peanut & Tree Nuts
Griffins Warehouse-McRae, LLC
Heart to Heart Arrhythmia & Medical Consultants
Hofstadter and Associates, Inc.
Holly Diana Floral
Jack's Family Restaurant
Jason's Fast Lube, LLC
Joy's Florist & Gifts
Little Ocmulgee EMC
Little Ocmulgee Instructional Center
Little Ocmulgee State Park & Lodge
Lowe's Funeral Home
Lumber City Drugs
Lumber City Hardware
Lumber City Health & Rehab
Martin Trucking, LLC
McDonald's Restaurant
McRae Bumper to Bumper
McRae Coca Cola
McRae Manor
McRae Rotary Club
McRae United Methodist Church
Milan State Bank
Milton CPA Services, LLC
Ocmulgee Title & Abstract
Oconee Dental Associates
Oconee Fall Line Technical College
Panda On
Piggly Wiggly
Pine Leaf Investments

Pioneer Historical Society
Robins Financial Credit Union
Roost Outdoors
Routh Realtors
Ryals Drug Store
Southern Charm
Southern Star Grill
Stamps-Walker Agency, Inc.
State Farm Insurance
Stinson's Bar-B-Que
Subway 12609
Susan Evans Realty
Telfair County Bank
Telfair County Extension/4-H
Telfair County Farm Bureau
Telfair Forest Products
Telfair County Recreation Department
Telfair County Schools
Telfair Medical Group of Jeff Davis Hospital
Telfair Snapshots
The Cannon Law Firm, LLC
The Merchants & Citizens Bank
The Security State Bank
The Telfair Enterprise
Three Rivers Home Health Services
Trinity Therapy Services
Tucker Seed Company
Webb Swamp Logging, LLC
Wheeler Correctional Facility (Core Civic)
Wheeler County State Bank
Windstream
Women in Need of God's Shelter, Inc.
Xpert Air & Refrigeration, LLC
Your Choice-McRae

Cornerstone Members

City of McRae-Helena
Georgia Power
Robins Financial Credit Union

Individual Members

Paula Anderson
Sherry Beasley
Guy Bland
Sarah Bowen
Betty Brewer
Debbie Bullard
Wendell Bullard
Lee Cannon
Ora Cooper
Billy Fred Crawford
Rose Crawford
Ruthie Jackson
Laura Kirk
Rep. Danny & Ellen Mathis
Matt Singleton
Eric Smith
Laura Smith
Walt Thigpen
Larry Wells
Bo Yawn

For more information about a Chamber Member

Telfair County Chamber of Commerce

9 East Oak Street | McRae-Helena, GA 31055

Ph: (229) 868-6365

Email: rogers@telfairco.org

Web: www.telfairco.org



Join today & let the Chamber work for you!

What is the Chamber of Commerce

The Chamber of Commerce is a voluntary, membership based, 501(c)6 nonprofit organization of the business community that unites businesses and professionals to build a better community.

The Chamber's Vision is to grow a vibrant, friendly community through Economic & Tourism Development and Partnerships.

The Chamber's Mission is to advocate for the county by brining all resources together to enhance the quality of life.

Who Can and should be a Member of the Chamber? ALL businesses, industries, professionals and individuals are not only eligible to be Chamber of Commerce members but should be!

Why You Should Join

I. Visibility

- Referrals
- Listing on Chamber Website
- Announcements on Chamber Facebook page
- Chamber Newsletter listing
- Brochure/Rack Card display at Chamber office
- Ribbon Cuttings & Grand Openings
- Shop At Home Program
- Free Advertisement in Chamber Special Promotions
(ex: Christmas Night Out)

II. Savings

- Members may qualify for discounts on commercial property/equipment insurance premiums with participating companies
- Members may qualify for discounts on workers compensation insurance premiums through Council on Alcohol & Drugs, Inc. "Drugs Don't Work" program
- Chamber members receive a discount on AirMedCare enrollment

III. Economic & Tourism Efforts

- Your business benefits from the Chamber's efforts to promote and ensure the growth of the community through small business, industry and tourism.
- The Chamber speaks on behalf of the community on matters that impact the business community and the community at large.

In addition to the regular annual membership dues, you can provide additional financial assistance to Economic Development by becoming a **"Cornerstone Level Member"**

This investment in the Telfair County Chamber of Commerce is far exceeded by the return that your business will receive as a result of development encouraged and cultivated by the Chamber's activities.

All Cornerstone Dues will be dedicated to economic development uses, such as prospect development, economic development marketing activities and staff development.

**Cornerstone Level \$1,000
(annually plus the applicable
regular annual membership dues)**



Chamber Membership
is an
INVESTMENT
in your
COMMUNITY!
Chamber Membership
is the most inexpensive
way for you to advertise
your business!

Telfair County Chamber of Commerce Annual Membership Dues

January 1—December 31

Please see the rate schedule below.

Type	Rate
Individuals	\$25
Churches	\$75
Civic Organizations (non-profits such as civic clubs/501c3)	\$75
Educational Facilities (public or private county/city school, public or private universities/colleges/technical schools)	\$450
Financial Institutions (banks, credit unions, loan/finance companies, financial advisors)	\$450
Health Institutions (public or private hospitals, surgical facilities, emergency care facilities)	\$450
Industry Level I: 1-50 employees (Manufacturing, productions, distribution, trucking, agriculture, nursing homes, personal care homes)	\$225
Industry Level II: 51-499 employees (Manufacturing, productions, distribution, trucking, agriculture, nursing homes, personal care homes)	\$275
Industry Level II: 500 plus employees (Manufacturing, productions, distribution, trucking, agriculture, nursing homes, personal care homes)	\$600
Professional Services (physicians, dentists, attorney, CPA's, accountants, booking services, insurance agents/companies, veterinarians, real estate agents, architects, engineers, contractors, appraisers, venues, caterers, etc.)	\$225
Retail Level I: 1-50 employees (any business that is required to charge sales tax)	\$225
Retail Level II: 51-499 employees (any business that is required to charge sales tax)	\$275
Retail Level III: 500 plus employees (any business that is required to charge sales tax)	\$600
Utility Companies (public or private providers of power, phone, internet, gas, water, sewer)	\$350



2023 Chamber Board of Directors' Meetings

All regular monthly meetings of the Telfair County Chamber of Commerce are held at the Telfair County Chamber of Commerce Office located at 9 East Oak St., McRae-Helena, GA unless other-

2023 Chamber Directors
 Laura Kirk, Chair 2023
 Laura Kirk Past Chair 2022
 Ora Cooper, Chair Elect 2024
 Laura Smith, Secretary
 Sherry Beasley
 Lee Cannon
 Ruthie Jackson
 Matt Singleton
 Eric Smith
 Larry Wells
 Bo Yawn

<u>Date</u>	<u>Time</u>	<u>Location</u>
January 10, 2023	5:30 p.m.	Telfair Co. Chamber Office
February 14, 2023	5:30 p.m.	Telfair Co. Chamber Office
March 14, 2023	5:30 p.m.	Telfair Co. Chamber Office
April 11, 2023	5:30 p.m.	Telfair Co. Chamber Office
May 9, 2023	5:30 p.m.	Telfair Co. Chamber Office
June 13, 2023	5:30 p.m.	Telfair Co. Chamber Office
July 2023	No meeting scheduled	_____
August 8, 2023	5:30 p.m.	Telfair Co. Chamber Office
September 12, 2023	5:30 p.m.	Telfair Co. Chamber Office
October 10, 2023	5:30 p.m.	Telfair Co. Chamber Office
November 14, 2023	5:30 p.m.	Telfair Co. Chamber Office
December 2023	No meeting scheduled	_____
January 9, 2024	5:30 p.m.	Telfair Co. Chamber Office



Guidelines for submitting information to be included in the Chamber's Newsletter

Requirements for listing an event, article or information in the Telfair County Chamber of Commerce monthly newsletter:

- *Must be a current member of the Telfair County Chamber of Commerce;
- *Information must be submitted according to the schedule listed below;
- *Information will be accepted on a first received basis and as long as space is available;
- *Information should be submitted in a Word Document, Publisher Document and/or photos in a high quality .jpeg;
- *Information should be submitted to the following email: rogers@telfairco.org.

Chamber cannot guarantee what page your information will be on or the size of the listing.

Deadline to submit articles, events or information to be included in the Chamber's Monthly Newsletter:

November 2023 Newsletter:	Deadline October 20, 2023
December 2023 Newsletter:	Deadline November 20, 2023
January 2024 Newsletter:	Deadline December 20, 2023
February 2024 Newsletter:	Deadline January 20, 2024

Telfair County Chamber of Commerce
9 East Oak Street
McRae-Helena, GA 31055
Phone: (229) 868-6365
Email: rogers@telfairco.org
Web: www.telfairco.org

