

# Industrial Park

Location:  
Hwy 280-McRae/Helena, GA

Property of the  
Development Authority of  
Telfair County



**Industrial Park**  
**Location: Hwy 280-McRae/Helena, GA**



View of Industrial Boulevard (Northwest)



View looking northeast from the western property line



View looking west from US Highway 280/319/441 and Industrial Boulevard



**Industrial Park**  
**Location: Hwy 280-McRae/Helena, GA**



View looking East from the Western property line

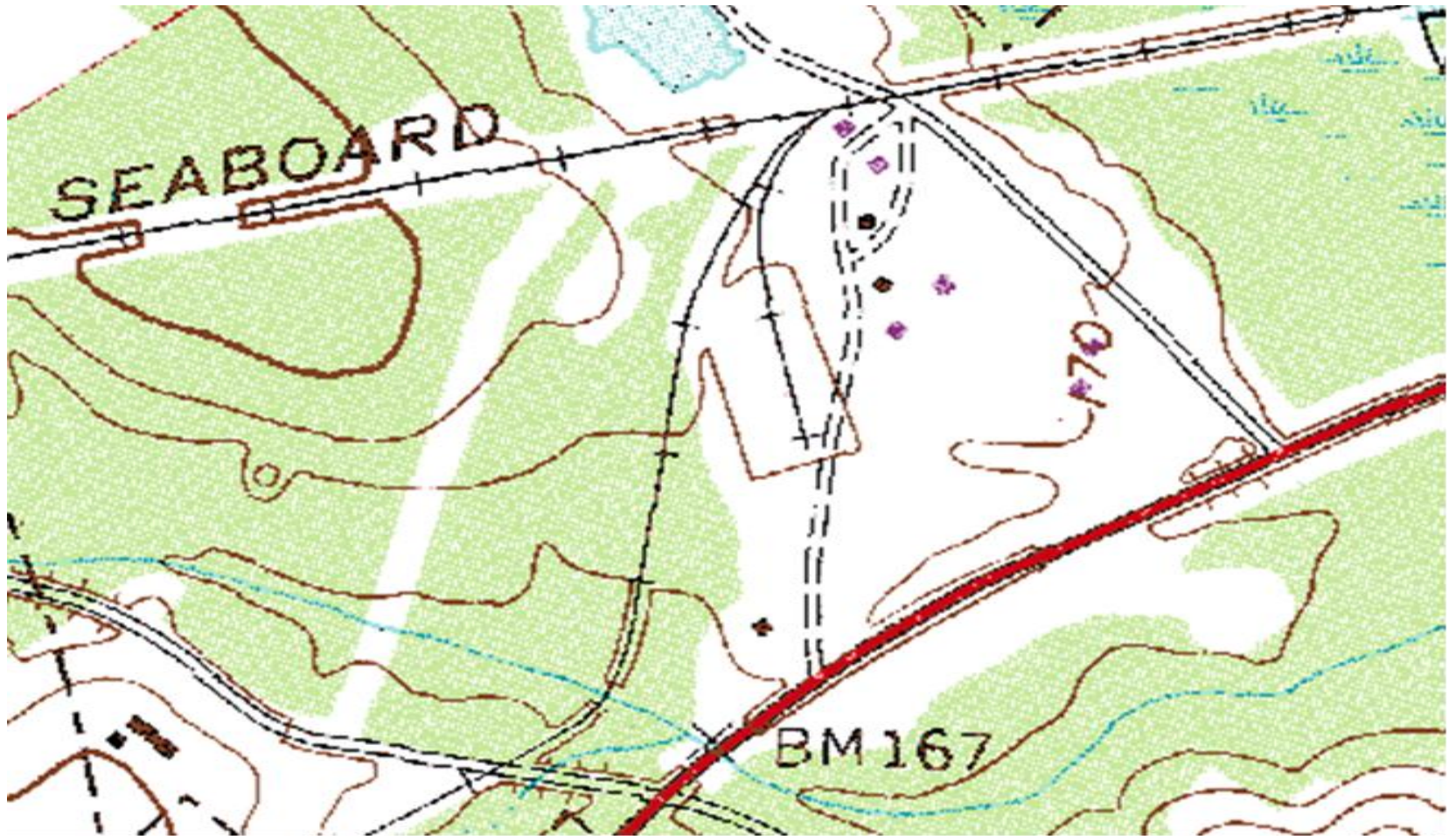


View looking West from Industrial Boulevard

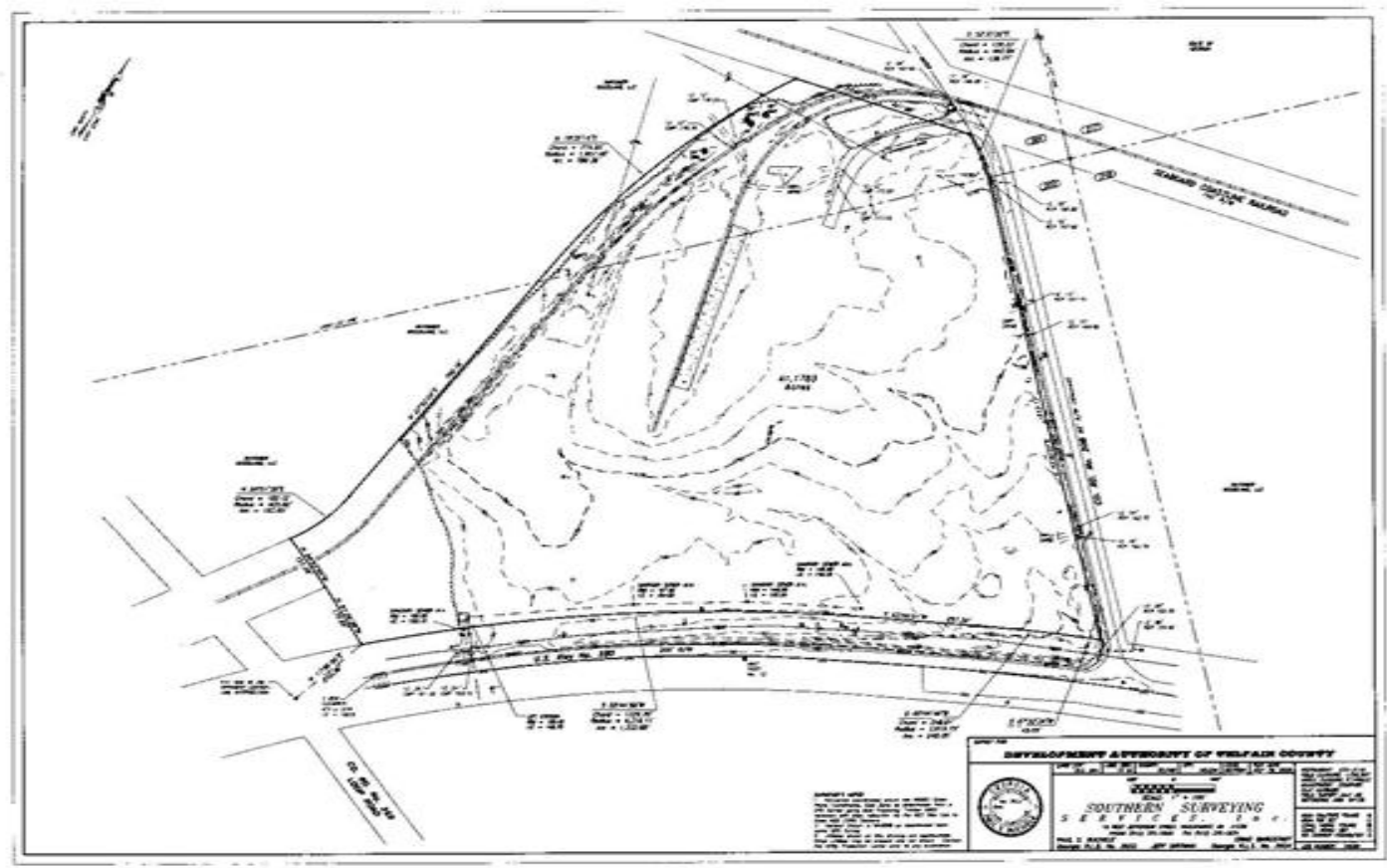




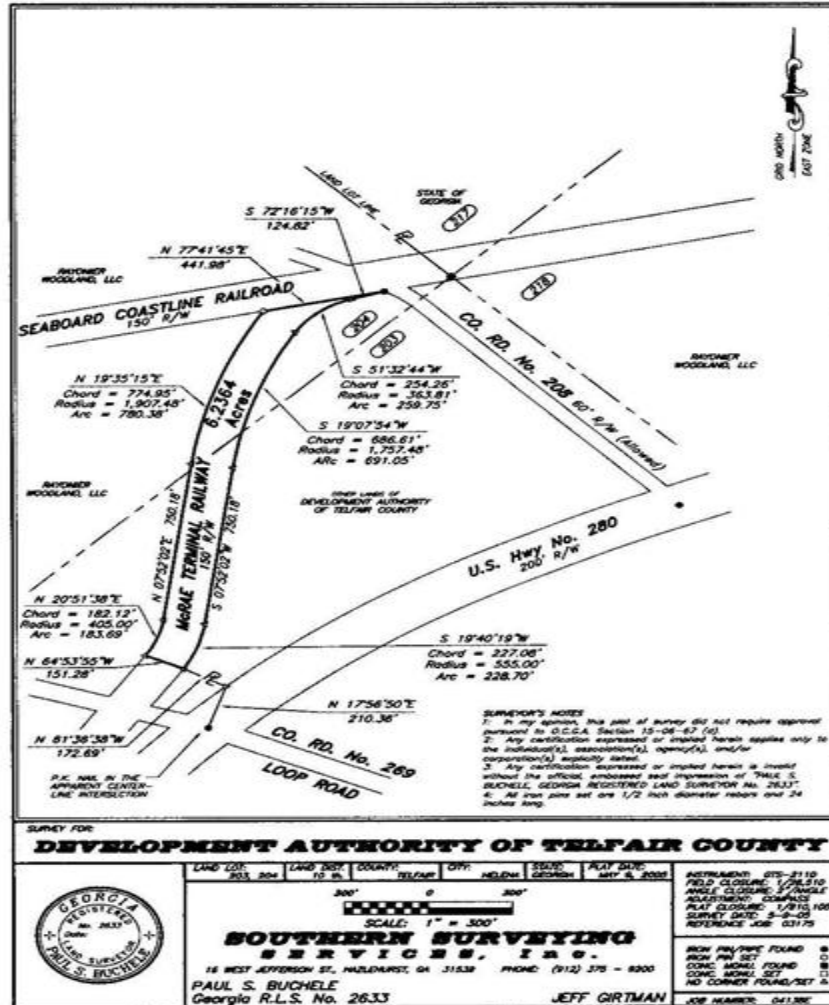
# TOPO



# Plat



# Rail Spur Plat





# Transportation

## Highway Access

- Site is located along US 441/280/319; GA 30/27
- Site is 57 miles from Interstate 75-Cordele via US 280;
- Site is 69 miles from Interstate 75-Tifton via US 319;
- Site is 61 miles from Interstate 75-Perry via US 341
- Site is 78 miles from Interstate 75-Macon via US 441/Interstate 16;
- Site is 111 miles from Interstate 95-Brunswick via US 341
- Site is 142 miles from Interstate 95-Savannah
- Site is 24 miles from Interstate 16. US 441/280 connects this site to Interstate 16

## Railroad Access

- Heart of Georgia Railroad is located along northern edge of this site:
- Existing spur track on site;
- Access to Norfolk Southern

## Airport Access

- Telfair-Wheeler Airport 1 mile from site  
5,001 Ft. Runway

## Waterways

- Port of Savannah 140 miles from site
- Port of Brunswick 100 miles from site
- Barge Facility 100 miles from site
- Brunswick Docks



## Utilities

Water:	City of Helena	Water Main Size 10"	On Site
Sewer:	City of Helena	Sewer Main Size 8"	On Site
Natural Gas:	Georgia Natural Gas	4" (High Pres.; 275 psi)	On Site
Telecommunications:	Windstream	25 and 200-Pair Copper, 4-Fiber Optic Cable	On Site
Electrical Supplier(s) with Potential Service:		Georgia Power Little Ocmulgee EMC	



## Telfair County is a Tier 1 County

- Job Tax Credits
- Manufacturing Machinery & Industrial Materials Sales and Use Tax Exemption
- Sales & Use Tax Exemption on Energy
- Exemption of Ad Valorem Tax on Inventory (Freeport)
- Workforce Investment Act (WIA)
- Business Expansion Support Act (BEST)

**This presentation is a publication of the  
Telfair County Chamber of Commerce  
9 East Oak Street  
McRae, Georgia 31055  
Office (229) 868-6365  
Cell (229) 860-0203  
Email [rogers@telfairco.org](mailto:rogers@telfairco.org)  
Web: [www.telfairco.org](http://www.telfairco.org)**

- US Census
- Georgia Department of Community Affairs
  - Georgia Department of Labor
  - Georgia Department of Revenue
  - Georgia Department of Education
- The Governor's Office of School Achievement
- Governor's Office of Workforce Development.
  - USA.com