

Retail/Processing Building

Location: Oak Street,
McRae, GA

Property of the
Development Authority
of Telfair County

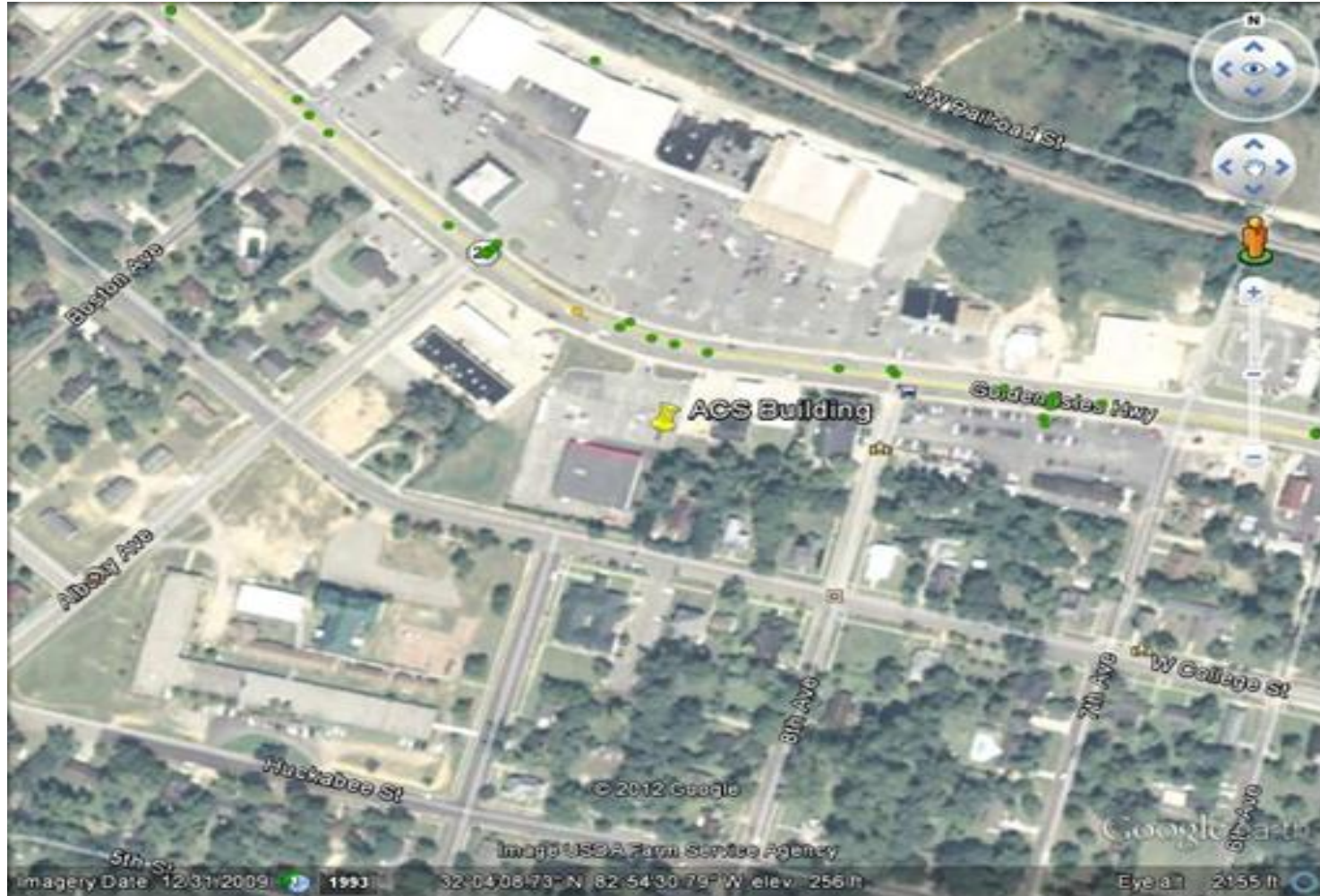


Retail/Processing Building
Location: Oak Street, McRae, GA



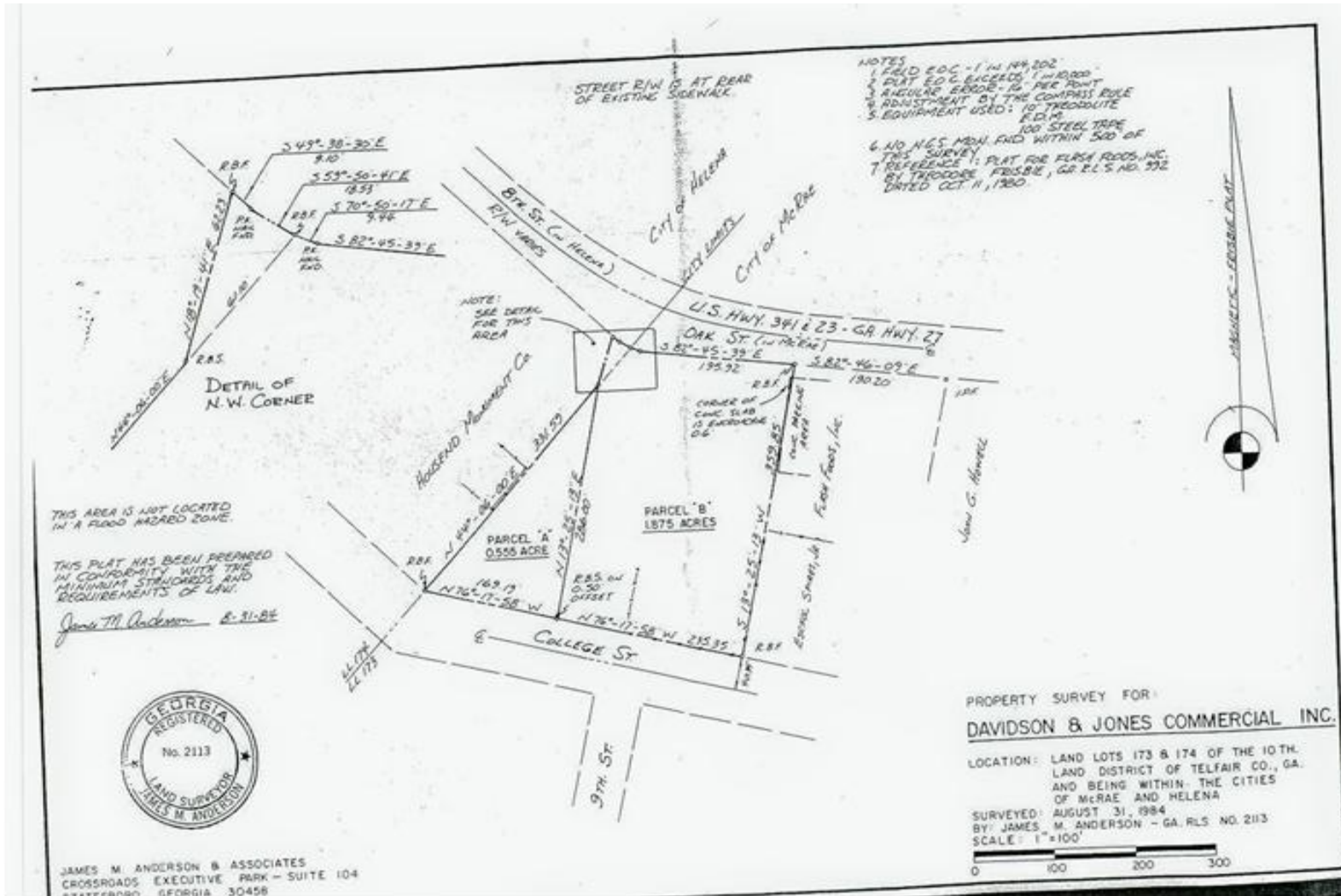
View from Oak St.

Arial Base Map



Retail/Processing Building
 Location: Oak Street, McRae, GA

Plat



Transportation

Highway Access

- Site is located along US 441/280/319; GA 30/27
- Site is 57 miles from Interstate 75-Cordele via US 280;
- Site is 69 miles from Interstate 75-Tifton via US 319;
- Site is 61 miles from Interstate 75-Perry via US 341
- Site is 78 miles from Interstate 75-Macon via US 441/Interstate 16;
- Site is 111 miles from Interstate 95-Brunswick via US 341
- Site is 142 miles from Interstate 95-Savannah
- Site is 24 miles from Interstate 16. US 441/280 connects this site to Interstate 16

Railroad Access

- Heart of Georgia Railroad is located along northern edge of this site;
- Existing spur track on site;
- Access to Norfolk Southern

Airport Access

- Telfair-Wheeler Airport 1 mile from site
5,001 Ft. Runway

Waterways

- Port of Savannah 140 miles from site
- Port of Brunswick 100 miles from site
- Barge Facility 100 miles from site
- Brunswick Docks



Utilities

Water:	City of McRae	Water Main Size: 6"
Sewer:	City of McRae	Sewer Main Size: 10"
Natural Gas:	Atlanta Gas Light company	Gas Main Size: 2"
Telecommunications:	Windstream	
Electrical Suppliers:	Georgia Power	

Telfair County is a Tier 1 County

- Job Tax Credits
- Manufacturing Machinery & Industrial Materials Sales and Use Tax Exemption
- Sales & Use Tax Exemption on Energy
- Exemption of Ad Valorem Tax on Inventory (Freeport)
- Workforce Investment Act (WIA)
- Business Expansion Support Act (BEST)

**This presentation is a publication of the
Telfair County Chamber of Commerce
9 East Oak Street
McRae, Georgia 31055
Office (229) 868-6365
Cell (229) 860-0203
Email rogers@telfairco.org
Web: www.telfairco.org**

- US Census
- Georgia Department of Community Affairs
 - Georgia Department of Labor
 - Georgia Department of Revenue
 - Georgia Department of Education
- The Governor's Office of School Achievement
- Governor's Office of Workforce Development.
 - USA.com